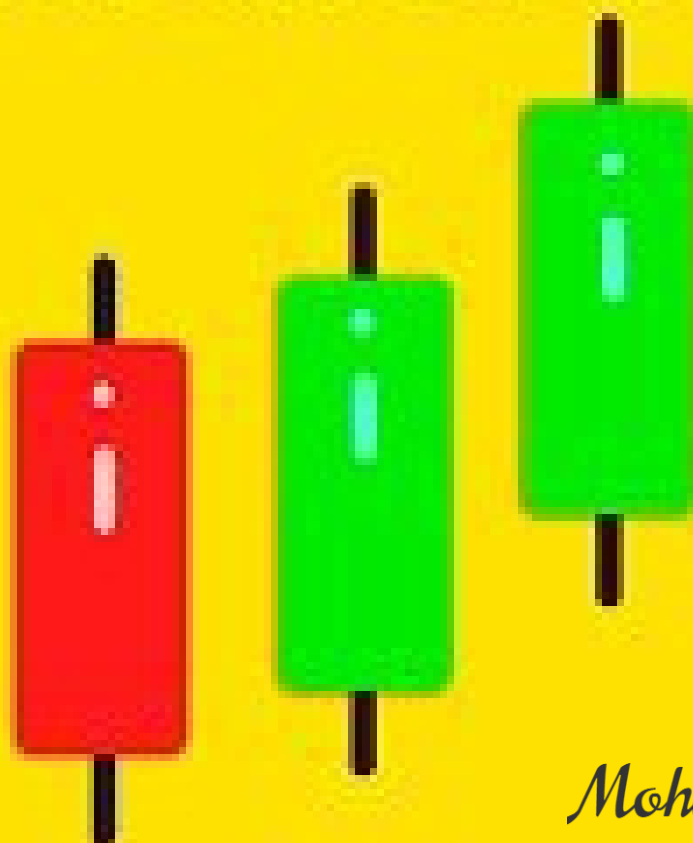


SIMPLE TRADING BOOK



Mohamed Nagy

Www.HorusAcademyEg.Com
«It's soooo simple»

CANDLESTICK CHEAT SHEET



BULLISH REVERSAL PATTERNS

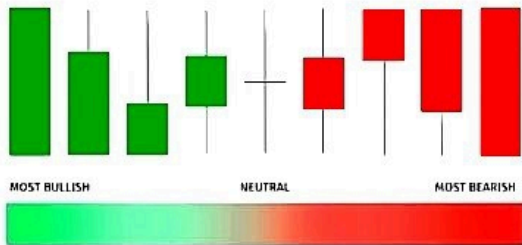


BEARISH REVERSAL PATTERNS

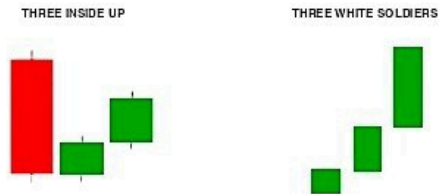


[Www.HorusAcademyEg.Com](http://www.HorusAcademyEg.Com)

STRENGTH OF CANDLESTICKS



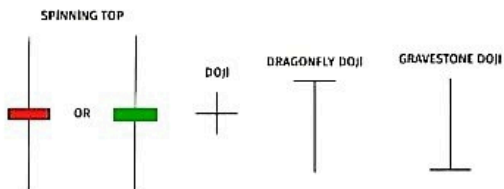
TRIPLE BULLISH PATTERNS



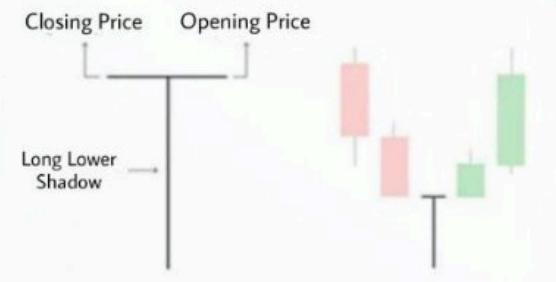
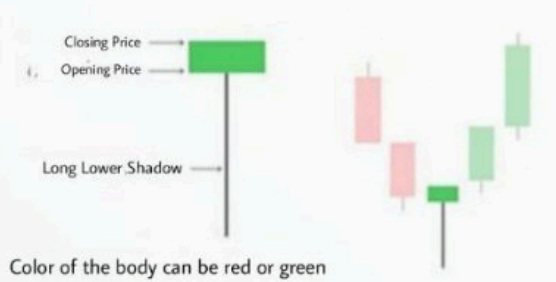
TRIPLE BEARISH PATTERNS



INDECISION PATTERNS



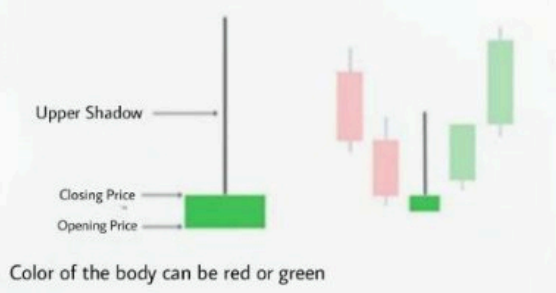
BULLISH CANDLESTICK PATTERNS



HAMMER PATTERN



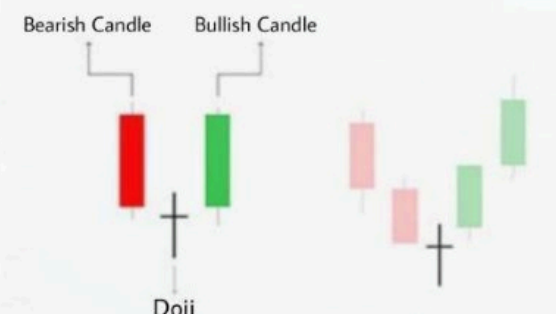
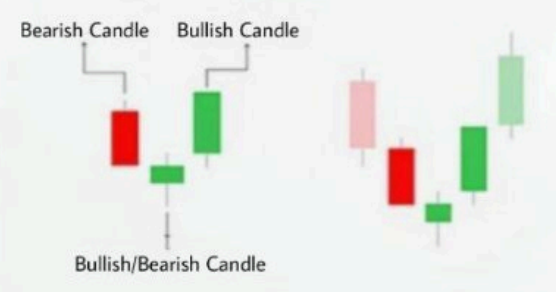
DRAGONFLY DOJI



INVERTED HAMMER

Www.HorusAcademyEg.Com

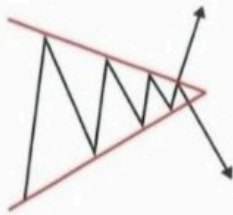
BULLISH ENGULFING



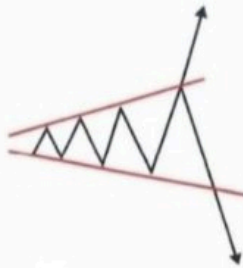
MORNING STAR

MORNING DOJI STAR

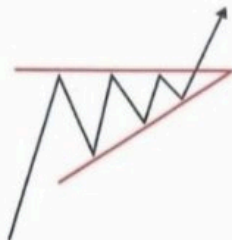
CLASSIC CHART PATTERNS



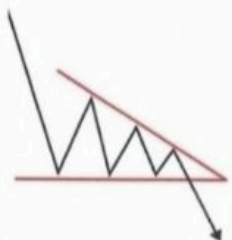
Symmetrical Triangle



Broadening Triangle



Ascending Triangle



Descending Triangle



Breakout can happen on either side (Upward/Downward)



Breakout can happen on either side (Upward/Downward)



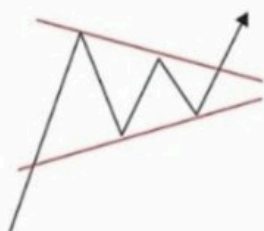
Breakout



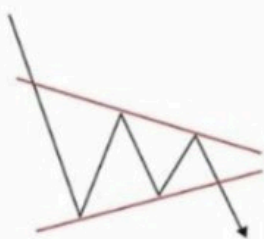
Breakdown

Www.HorusAcademyEg.Com
Mohamed Nagy

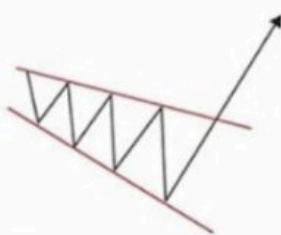
CLASSIC CHART PATTERNS



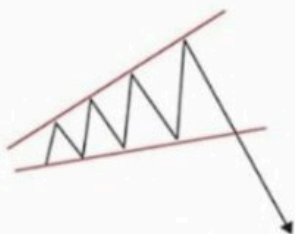
Bullish Pennant



Bearish Pennant



Descending Broadening Wedge



Ascending Broadening Wedge



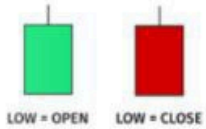
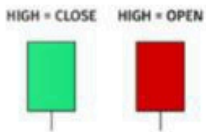
Www.HorusAcademyEg.Com

Mohamed Nagy

CANDLESTICK CHEAT SHEET

Www.HorusAcademyEg.Com

BULLISH REVERSAL PATTERNS



HAMMER



BULLISH ENGULFING



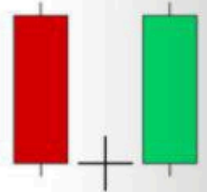
BULLISH MARUBOZU



TWEEZER BOTTOM



MORNING STAR



BEARISH REVERSAL PATTERNS

SHOOTING STAR



BEARISH ENGULFING



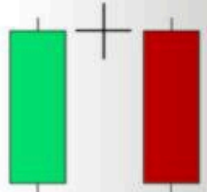
BEARISH MARUBOZU



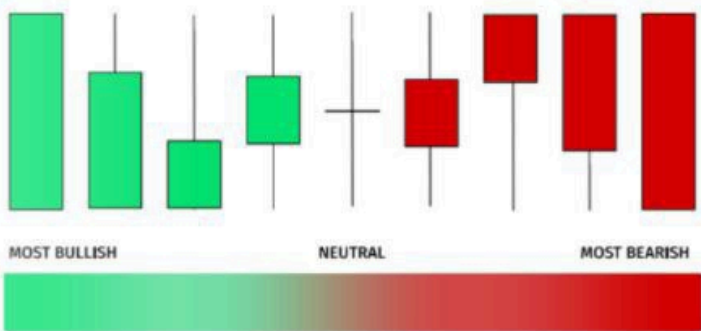
TWEEZER TOP



EVENING STAR



STRENGTH OF CANDLESTICKS



Www.HorusAcademyEg.Com

TRIPLE BULLISH PATTERNS

THREE INSIDE UP



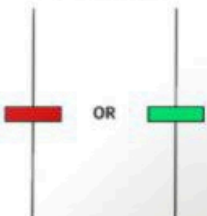
THREE WHITE SOLDIERS



INDECISION PATTERNS

Www.HorusAcademyEg.Com

SPINNING TOP



DOJI



DRAGONFLY DOJI



GRAVESTONE DOJI



TRIPLE BEARISH PATTERNS

THREE INSIDE DOWN



THREE BLACK CROWS





CHART PATTERNS IN TECHNICAL ANALYSIS — CHEAT SHEET —



BULLISH PATTERNS (GOING UP)

Www.HorusAcademyEg.Com



Flag



Pennant



Cup With Handle



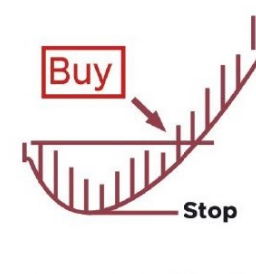
Ascending Triangle



Symmetrical Triangle



Measured Move Up



Ascending Scallop



3 Rising Valleys

BEARISH PATTERNS (GOING DOWN)



Flag



Pennant



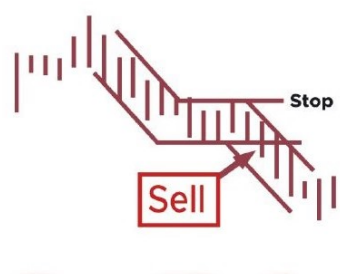
Inverted Cup With Handle



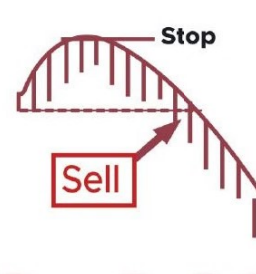
Descending Triangle



Symmetrical Triangle



Measured Move Down



Descending Scallop



3 Descending Peaks

REVERSAL PATTERNS



Double Bottoms



Diamond Bottoms



Rectangle Tops



Head & Shoulders (Top)



Double Tops



Diamond Tops



Rectangle Bottoms



Head & Shoulders (Bottom)

@knowledge of stock market

REVERSAL CHART PATTERNS

<p>Double Top</p>	<p>Head and Shoulders</p>	<p>Rising Wedge</p>
<p>Double Bottom</p>	<p>Inverse Head and Shoulders</p>	<p>Falling Wedge</p>

CONTINUATION CHART PATTERNS

<p>Falling Wedge</p>	<p>Bullish Rectangle</p>	<p>Bullish Pennant</p>
<p>Rising Wedge</p>	<p>Bearish Rectangle</p>	<p>Bearish Pennant</p>

BILATERAL CHART PATTERNS

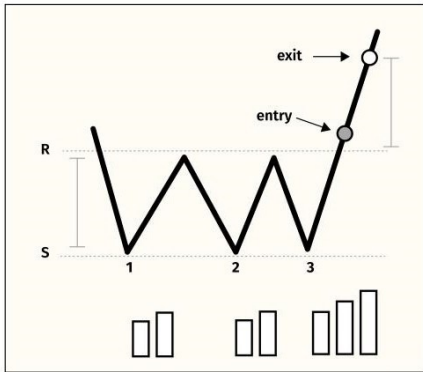
<p>Ascending Triangle</p>	<p>Descending Triangle</p>	<p>Symmetrical Triangle</p>
----------------------------------	-----------------------------------	------------------------------------

Chart Patterns Cheat Sheet

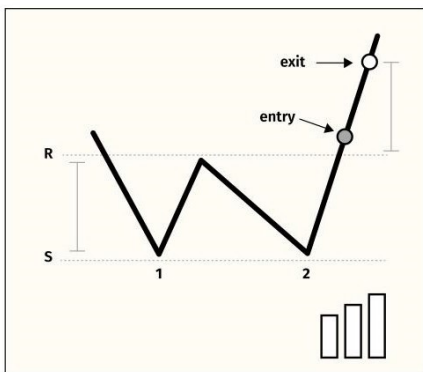
REVERSAL PATTERNS

BULLISH

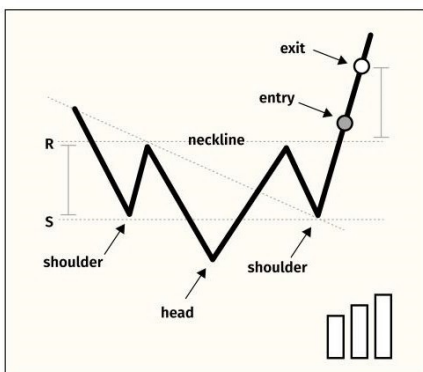
Triple Bottom



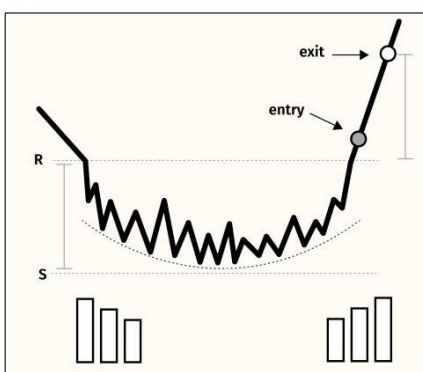
Double Bottom



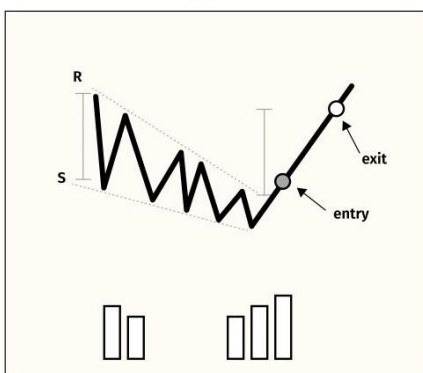
Inverse Head & Shoulders



Rounded Bottom

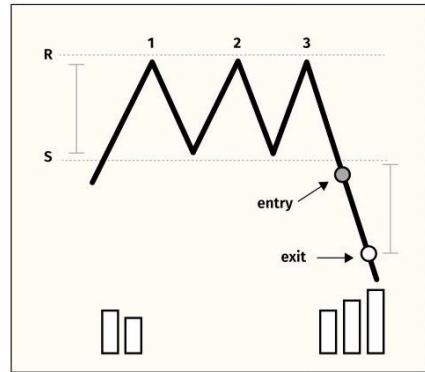


Falling Wedge

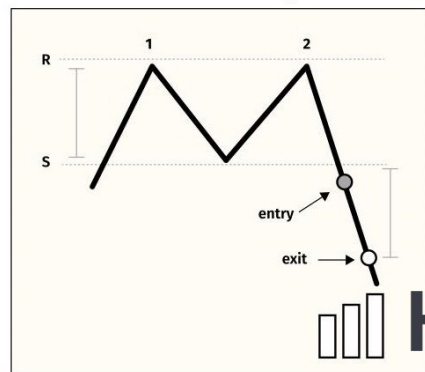


BEARISH

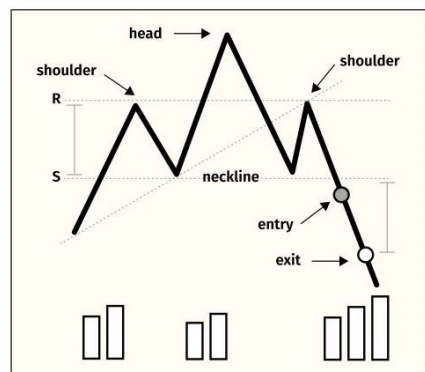
Triple Top



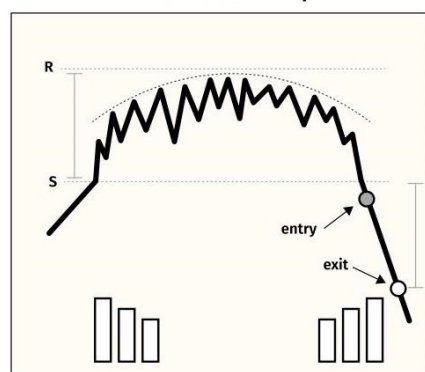
Double Top



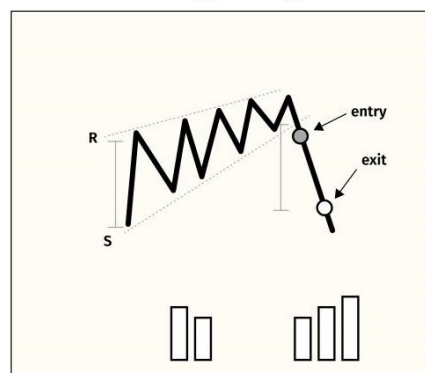
Head & Shoulders



Rounded Top



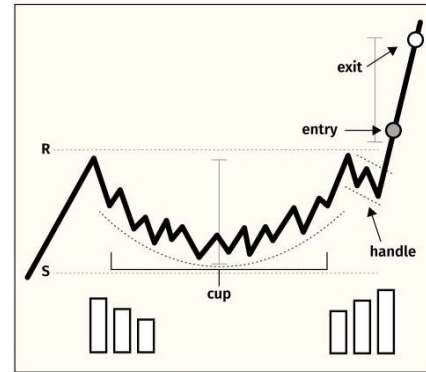
Rising Wedge



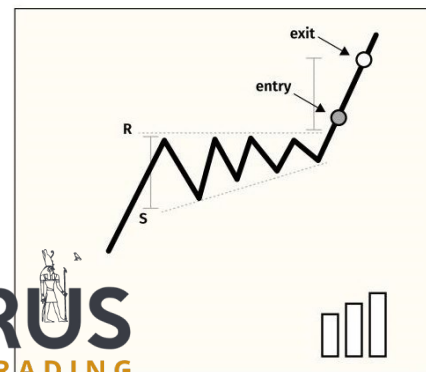
CONTINUATION PATTERNS

BULLISH

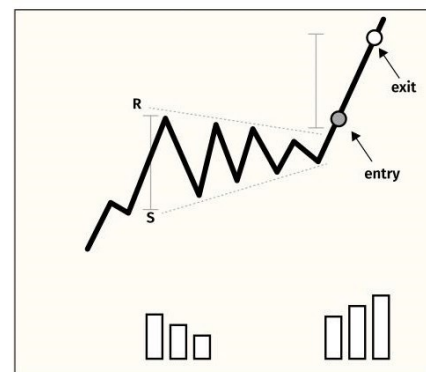
Cup & Handle



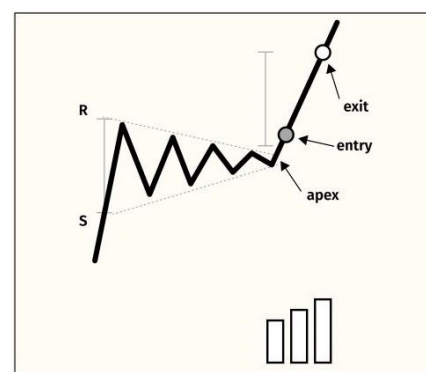
Ascending Triangle



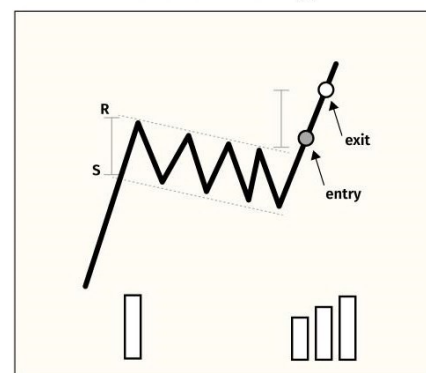
Bullish Symmetrical Triangle



Bullish Pennant

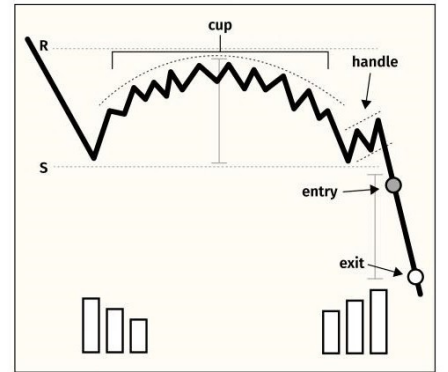


Bullish Flag

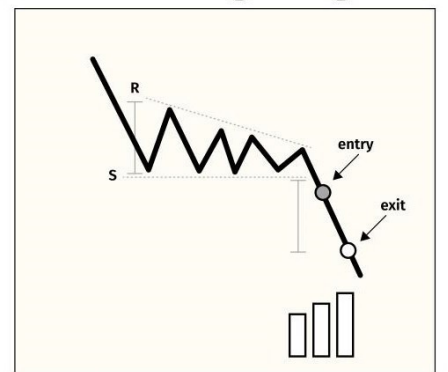


BEARISH

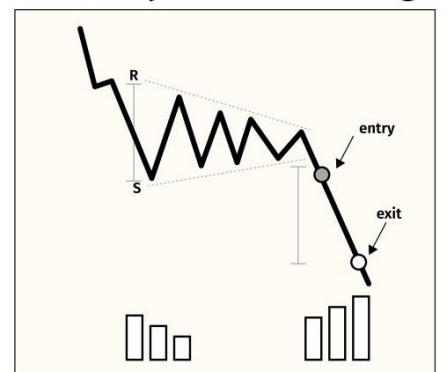
Inverted Cup & Handle



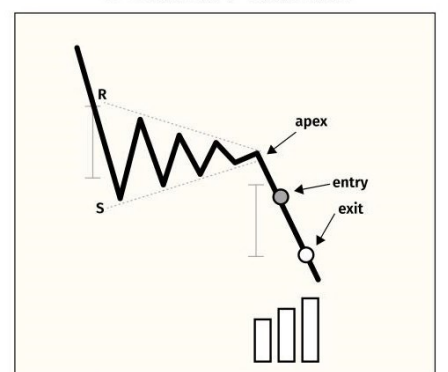
Descending Triangle



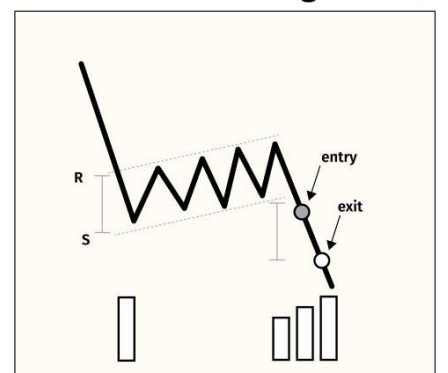
Bearish Symmetrical Triangle



Bearish Pennant



Bearish Flag



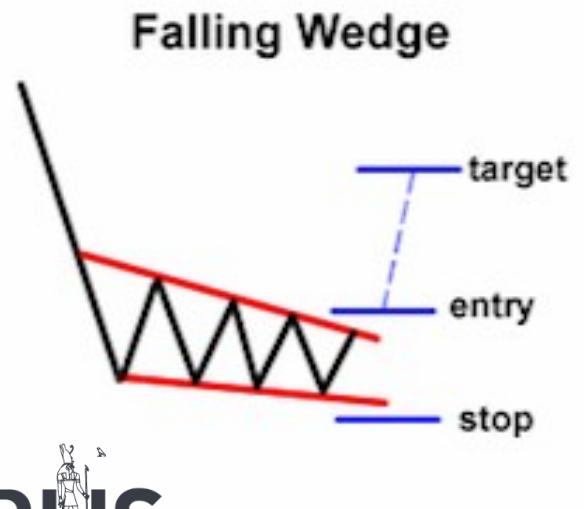
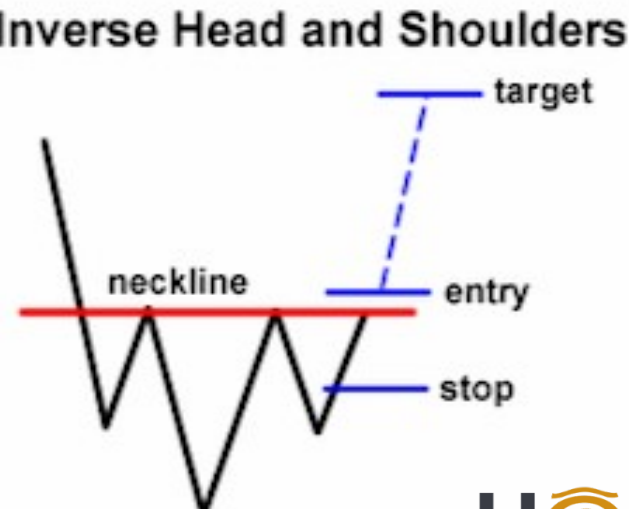
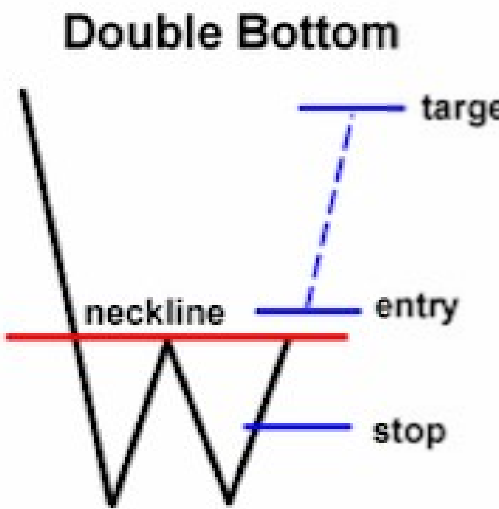
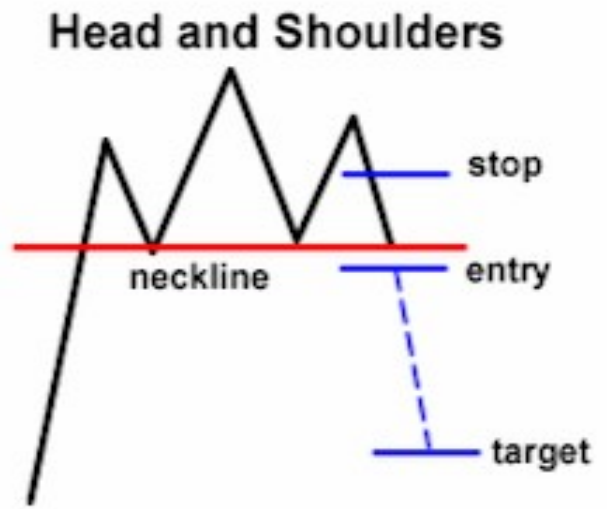
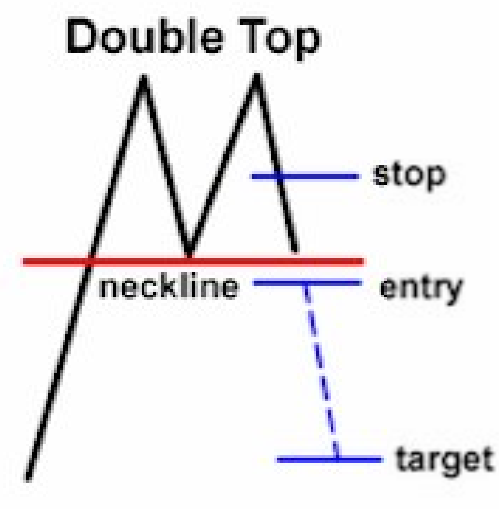
Advanced Chart Patterns

Www.HorusAcademyEg.Com

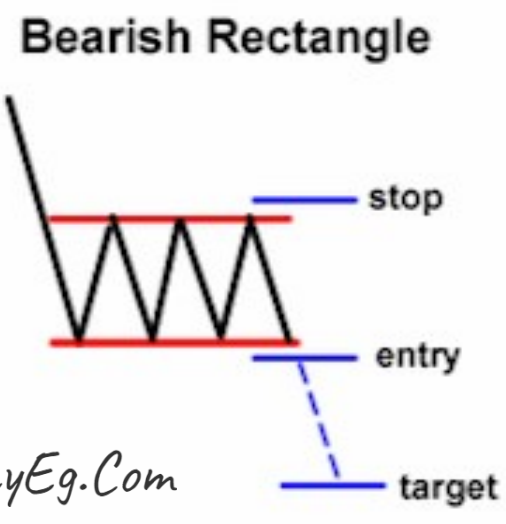
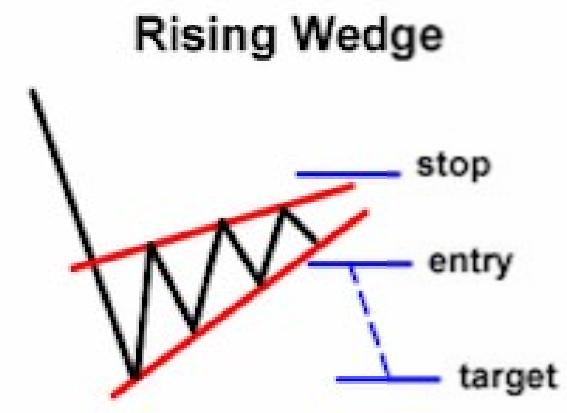
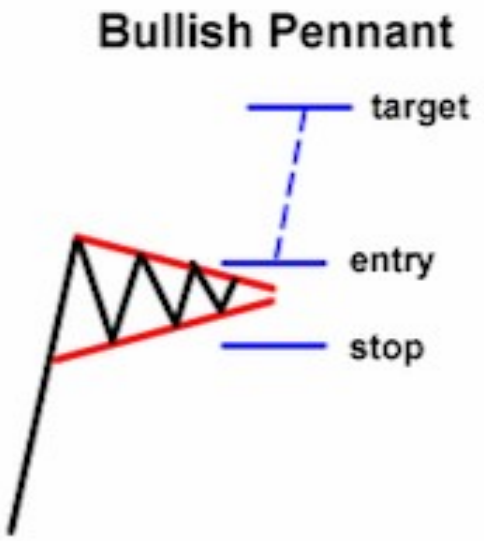
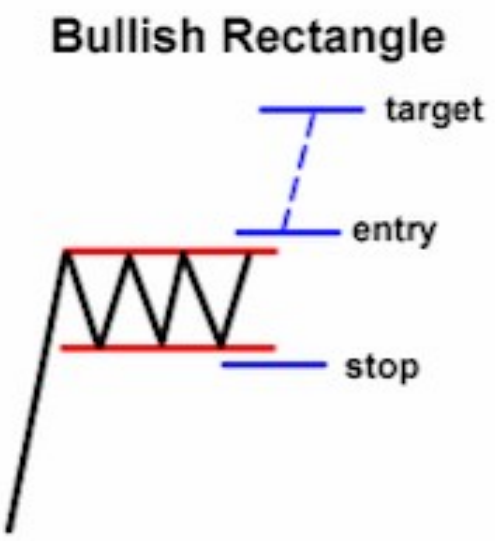
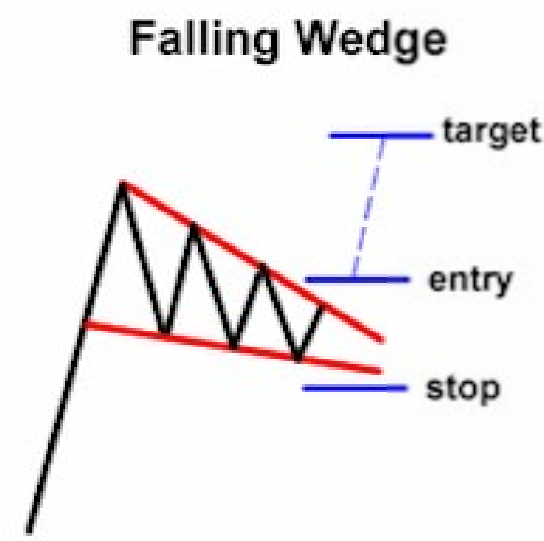


<p>Cup w/ Handle</p> <p>Defects: (w/o handle 6 wk min)</p>	<p>Double Bottom</p> <p>BP if on heavy vol (Shakeout Plus 3)</p>	<p>Saucer Base</p> <p>Usually < 20%</p>
<p>Flat Base</p> <ul style="list-style-type: none"> • often when market not making much upward progress 	<p>Square Box</p> <ul style="list-style-type: none"> • avoid wide and loose action 	<p>Ascending Base</p> <ul style="list-style-type: none"> • often in uneven market • best if shallower each time
<p>High Tight Flag</p>	<p>3 Tight Closes</p>	<p>Short Stroke</p>
<p>Handles</p>	<p>Pullback</p> <ul style="list-style-type: none"> • Can add first 2 times it pulls back to 50dma 	<p>Misc Rules</p> <ul style="list-style-type: none"> • all BP +10 cents • ideal prior uptrend >30% • for wks abv avg vol: #up>#down • up 20% for new base • undercut base resets base count • 66% of 3rd stage base fails • 80% of 4th stage base fails • in base bottom look for: <ul style="list-style-type: none"> • shakeout • tight closes • volume dryout • accumulation

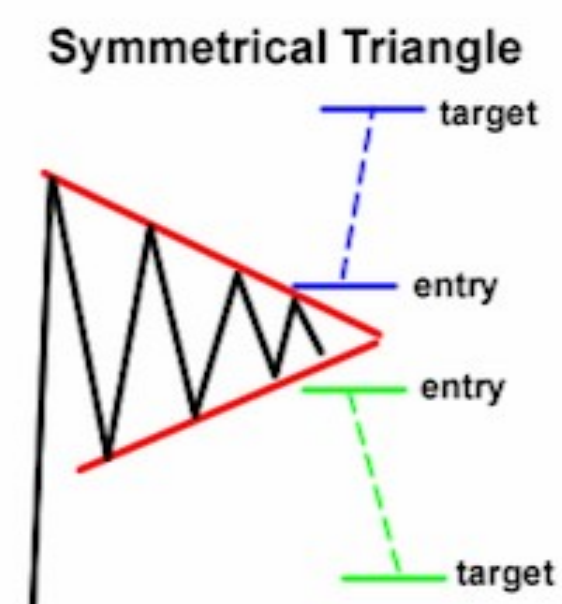
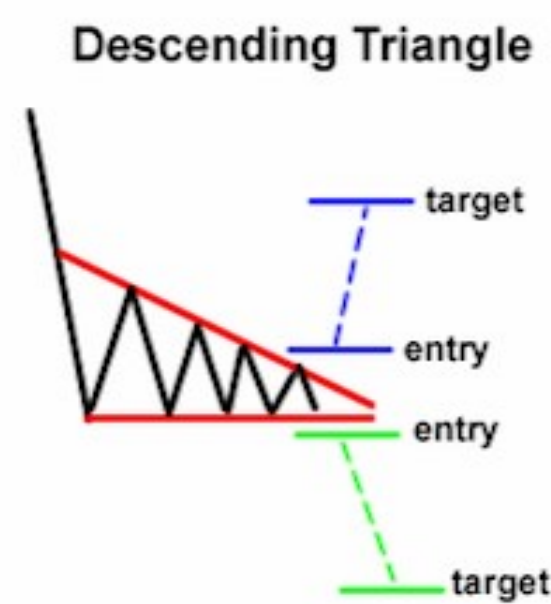
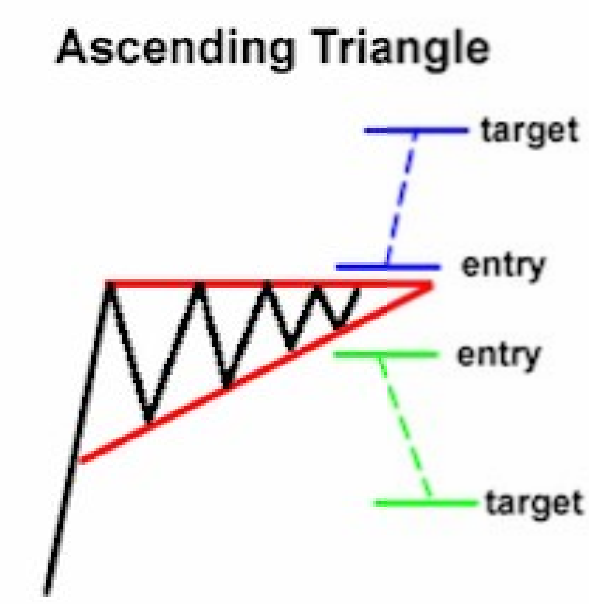
Reversal Patterns



Continuation Patterns



Bilateral Patterns



Forex Chart Patterns Cheatsheet

Continuation Patterns:

Bullish Flag Pattern Bullish Pennant Pattern Bullish Falling Wedge

Www.HorusAcademyEg.Com

Bearish Flag Pattern Bearish Pennant Pattern Bearish Rising Wedge

Reversal Patterns:

Bearish Double Top Bearish Head and Shoulders Bearish Rising Wedge

Bullish Double Bottom Bullish Inverted Head and Shoulders Bullish Falling Wedge

Bearish Expanding Triangle Bearish Triple Top

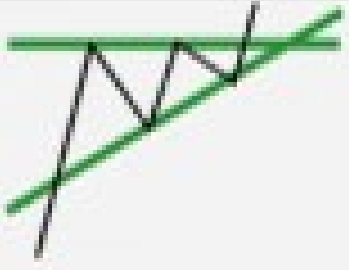
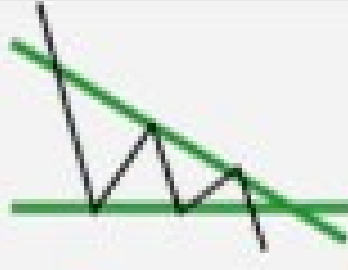
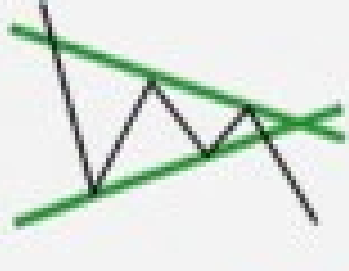
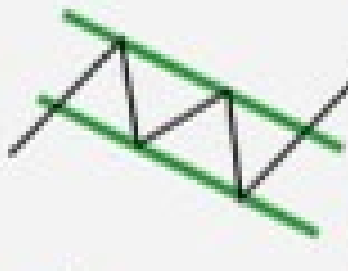
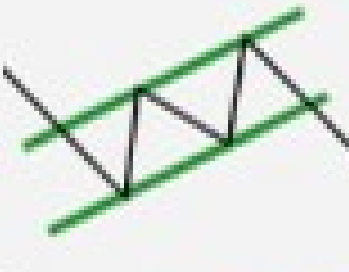

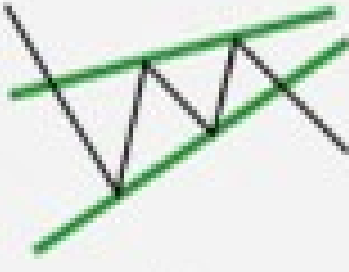
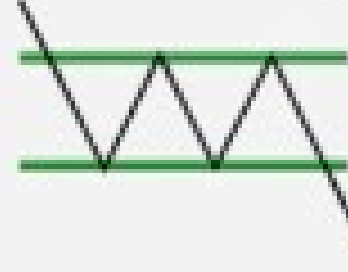

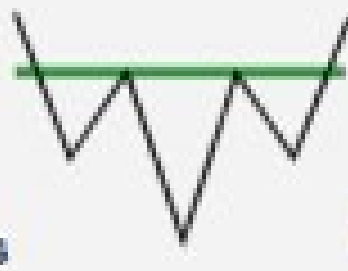
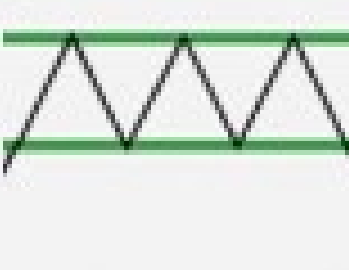
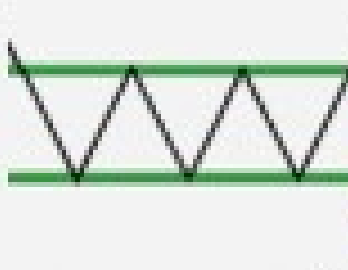

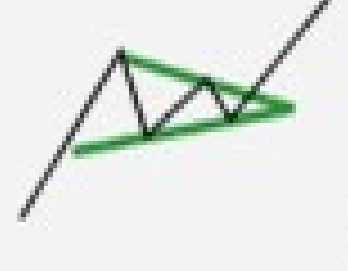
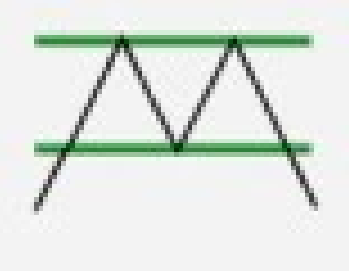
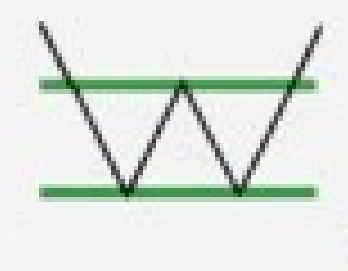
Bullish Expanding Triangle Bullish Triple Bottom

Neutral Patterns:

Ascending Triangle Descending Triangle

Symmetrical Triangle Symmetrical Expanding Triangle

Patterns

<input checked="" type="checkbox"/> Ascending Triangle		<input checked="" type="checkbox"/> Descending Triangle	
<input checked="" type="checkbox"/> Triangle		<input checked="" type="checkbox"/> Channel Down	
<input checked="" type="checkbox"/> Channel Up		<input checked="" type="checkbox"/> Falling Wedge	
<input checked="" type="checkbox"/> Rising Wedge		<input checked="" type="checkbox"/> Rectangle	
<input checked="" type="checkbox"/> Head and Shoulders		<input checked="" type="checkbox"/> Inverse Head and Shoulders	
<input checked="" type="checkbox"/> Triple Top		<input checked="" type="checkbox"/> Triple Bottom	
<input checked="" type="checkbox"/> Flag		<input checked="" type="checkbox"/> Pennant	
<input checked="" type="checkbox"/> Double Top		<input checked="" type="checkbox"/> Double Bottom	



Www.HorusAcademyEg.Com

Bullish patterns (going up)



Flag



Pennant



Cup with handle



Ascending triangle



Symmetrical triangle



Measured move up



Ascending scallop



3 rising valleys

Bearish patterns (going down)



Flag



Pennant



Inverted cup with handle



Descending triangle



Symmetrical triangle



Measured move down



Descending scallop



3 descending peaks

www.HorusAcademyEg.Com

www.HorusAcademyEg.Com

Reversal patterns



Double bottoms



Diamond bottoms



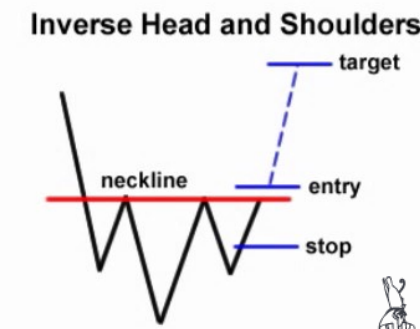
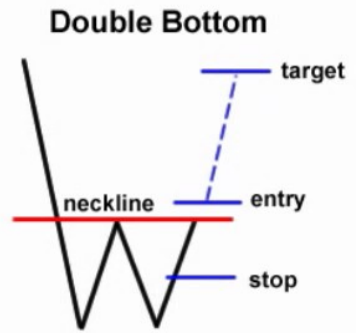
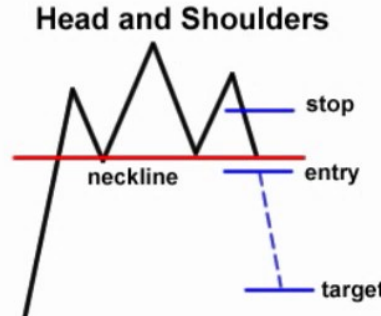
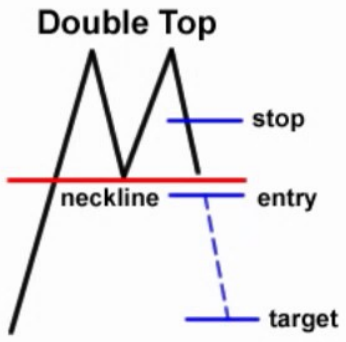
Tops rectangle



Head and shoulders top



REVERSAL CHART PATTERNS



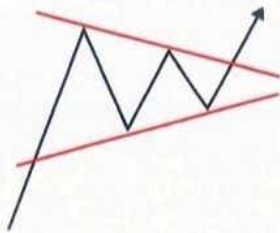
www.HorusAcademyEg.Com



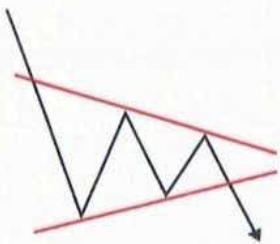
www.HorusAcademyEg.Com



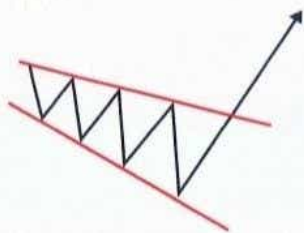
Classic Chart Patterns



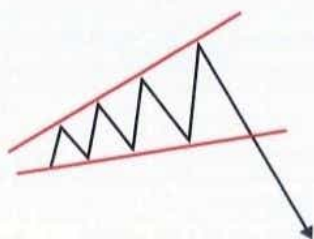
Bullish Pennant



Bearish Pennant



Descending BROADENING Wedge

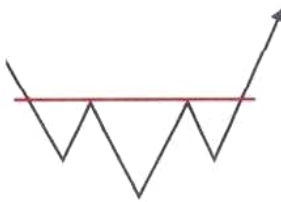


Ascending BROADENING Wedge

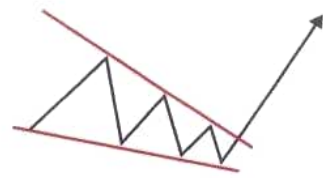




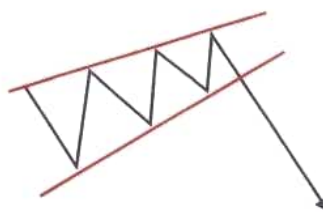
Head and Shoulders



Inverted Head and Shoulders



Falling Wedge



Rising Wedge

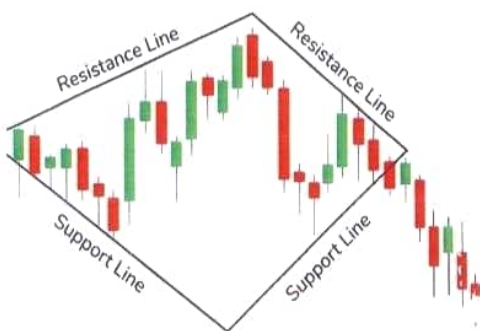




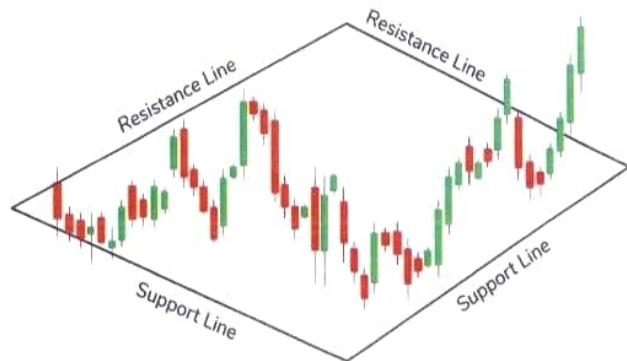
Cup and Handle



Rounding Bottom



Diamond Top



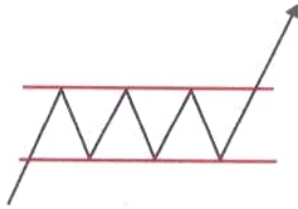
Diamond Bottom



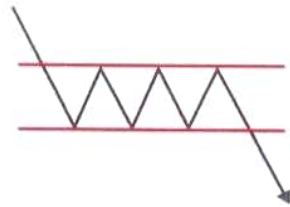
www.HorusAcademyEg.Com

Mohamed Nagy

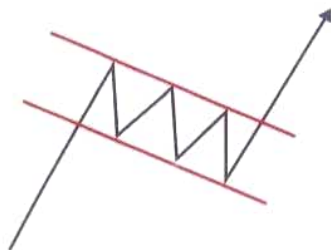
Classic Chart Patterns



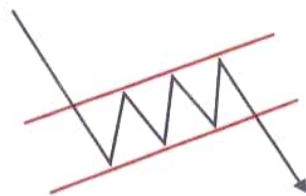
Bullish Rectangle



Bearish Rectangle

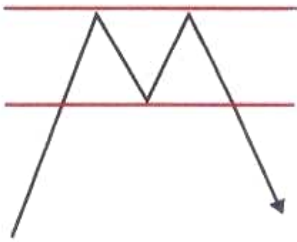


Bullish Flag

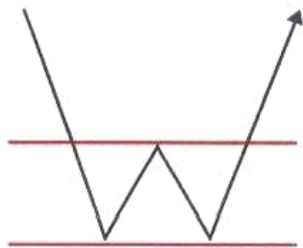
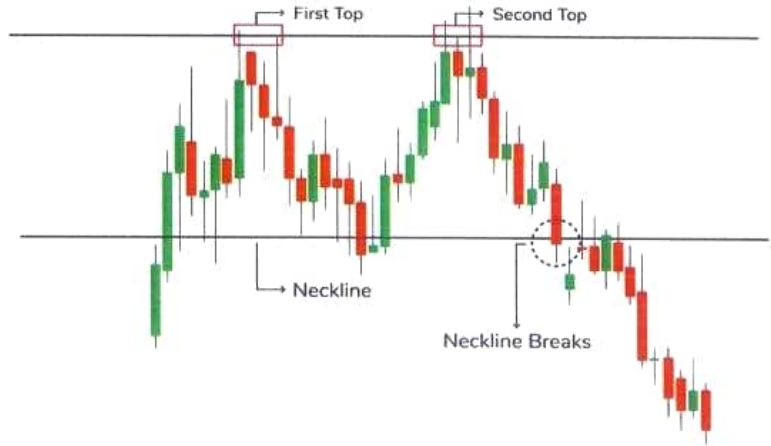


Bearish Flag

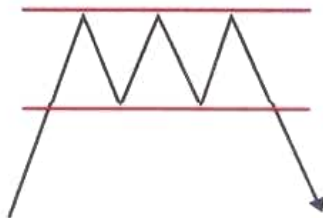
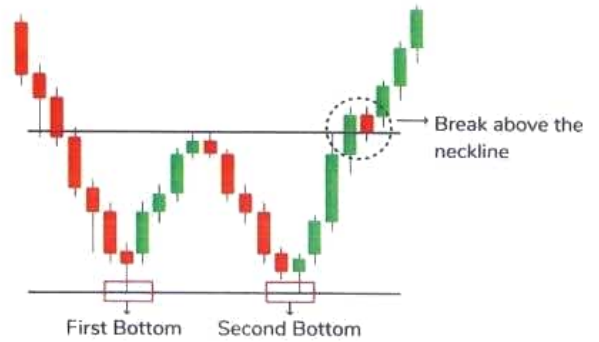




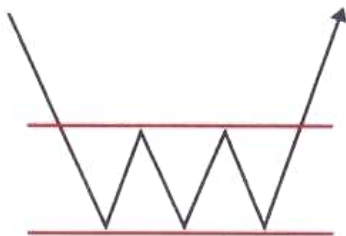
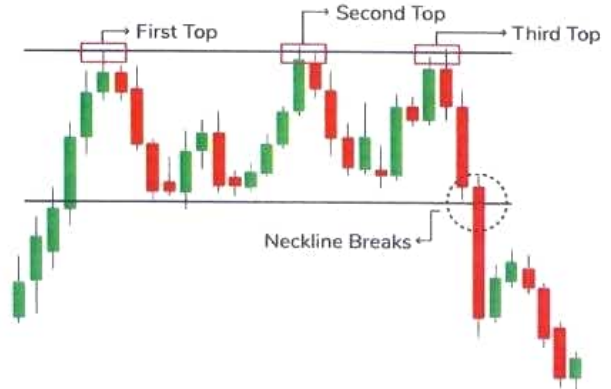
Double Top



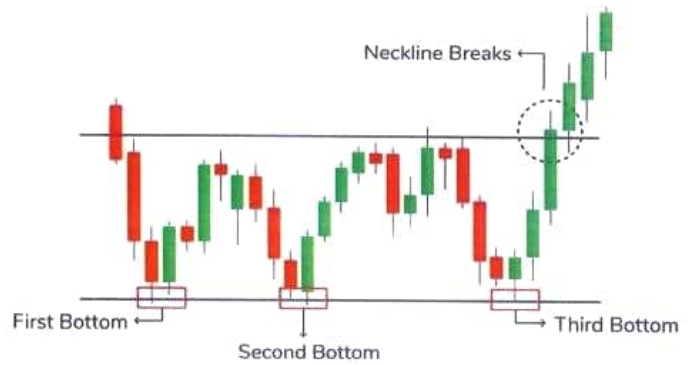
Double Bottom



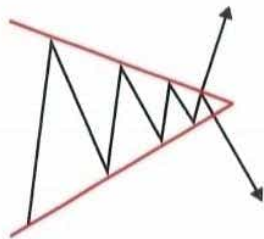
Triple Top



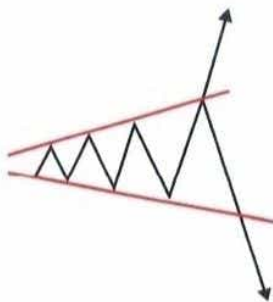
Triple Bottom



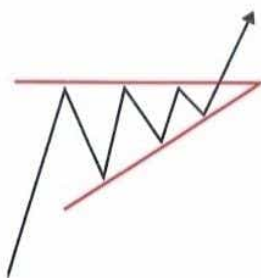
Classic Chart Patterns



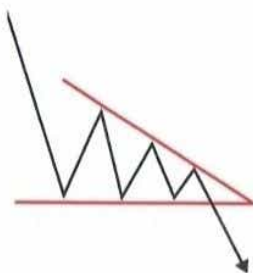
Symmetrical Triangle



Broadening Triangle



Ascending Triangle



Descending Triangle

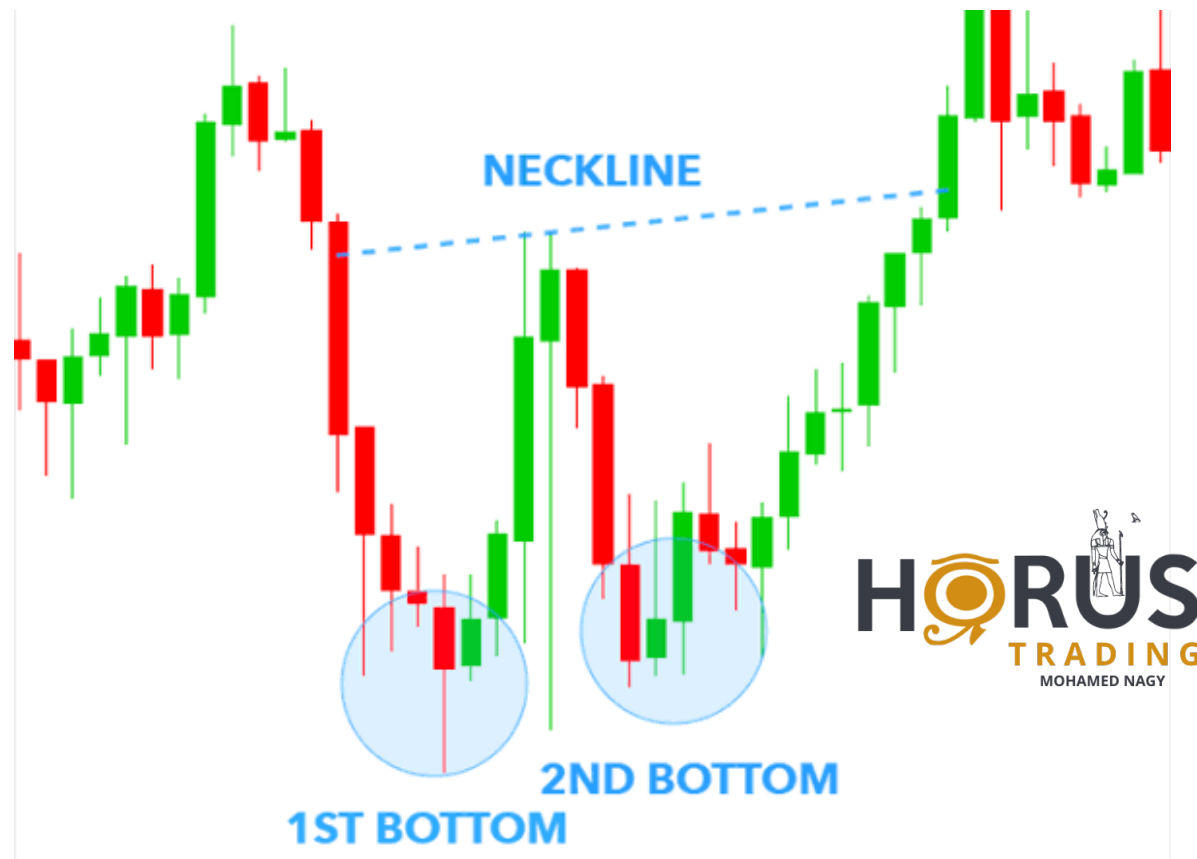


Double Top



What Is a Double Top? A double top is an extremely bearish technical reversal pattern that forms after an asset reaches a high price two consecutive times with a moderate decline between the two highs. It is confirmed once the asset's price falls below a support level equal to the low between the two prior highs.

Double Bottom



The double bottom pattern is a bullish reversal pattern that occurs at the bottom of a downtrend and signals that the sellers, who were in control of the price action so far, are losing momentum. The pattern resembles the letter "W" due to the two-touched low and a change in the trend direction from a downtrend to an uptrend.

Www.HorusAcademyEg.Com

Mohamed Nagy

Tripl Top



TRIPLE TOP



The triple top pattern occurs when the price of an asset creates three peaks at nearly the same price level. The area of the peaks is resistance. The pullbacks between the peaks are called the swing lows.

Tripl Bottom



Mohamed Nagy

A triple bottom is a visual pattern that shows the buyers (bulls) taking control of the price action from the sellers (bears). A triple bottom is generally seen as three roughly equal lows bouncing off support followed by the price action breaching resistance.